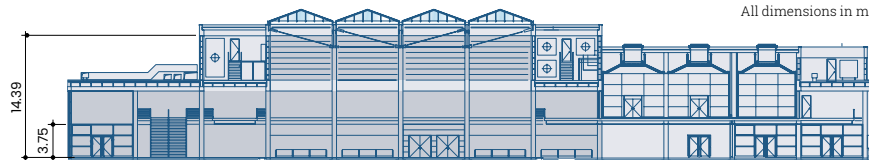


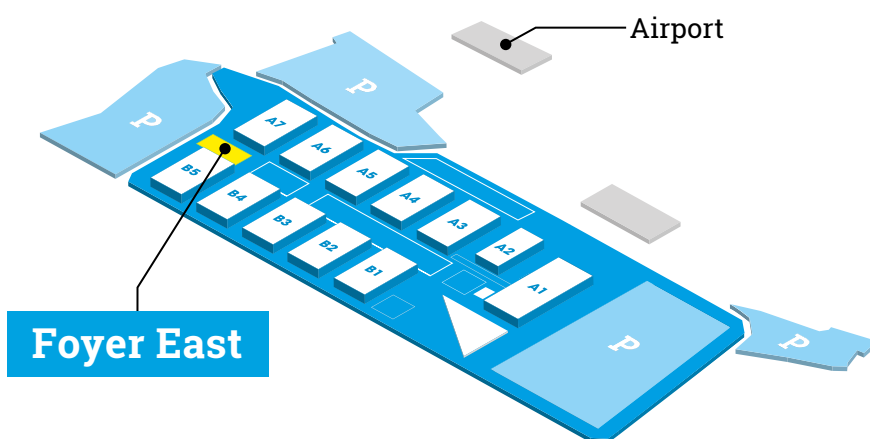


Cross-section A-A & B-B
All dimensions in m



FOYER EAST

You will love the versatility of the multipurpose Foyer East. With the help of the very latest technology and perfect service, just about any event can be held here. The Open-Air Grounds East immediately adjacent offer you still more scope – for open-air demonstrations, for example. The Europa Lounge, a special VIP area on the upper floor, rounds out the service.



**Ideal for meetings,
conferences
and events.**

Can be combined with
Conference Center East.

Space for up to 3,000 people.

Foyer size:

3,500 m²

Visitors:
up to

3,000 

Floor load:
max.

1,500 kg/m²

FOYER EAST

